

Solent Coast and Marine LNRS



www.solentforum.org



What is a LNRS?

- Introduced by the Environment Act 2021, Local Nature Recovery Strategies (LNRS) are a new system of plans for nature recovery covering the whole of England. They will include:
 1. a map of the most valuable areas for wildlife
 2. opportunities to improve nature in the future
 3. local priorities
- The Act establishes 2 mechanisms to support the delivery of local nature recovery strategies:
 1. mandatory biodiversity net gain (introduced 12 Feb)
 2. a strengthened biodiversity duty on public authorities

What has happened so far?

- Solent Forum was asked by Responsible Authorities (Hampshire CC and IoW Council) to coordinate a Solent coast and marine workshop.
- Workshop held on 16 Jan 2024 with sixty delegates.
- Webpage built to record information and workshop output report produced.
- During 2024 the Solent Forum will be working with the Responsible Authorities on the inclusion of coast and marine into the preparation of their first LNRS'. Coast and intertidal is automatically included as the strategies follow local planning authority boundaries to MLWM.
- Solent Forum will continue to work with the Solent Seascape project on their mapping data portal and the Solent seascape recovery plan. This will form an important part of Solent coast and marine LNRS work in the future.

Solent LNRS Coast and Marine



Solent LNRS Coast and Marine: Key Findings

1. Partnership working is essential to share knowledge, data, expertise, and funding.
2. We need to take a seascale approach to nature recovery, sites do not stand in isolation, they are connected across the terrestrial/coast/marine interface and the wider water environment.
3. Nature recovery has multiple benefits and this needs to be set out clearly to the people that work and live in the Solent to get political and public support.
4. In the Solent nature recovery is already happening and many people that work in the Solent are comfortable with and used to working in partnership sharing knowledge, expertise and resources. This is positive start in an area that is heavily used for commerce and recreation and where habitats are under pressure.

What is the timeline?



What is national guidance on coast/marine saying?

Marine is an evolving picture, but....

The statutory guidance states:

“Coastal local nature recovery strategies are required to follow the relevant local authorities’ boundaries. This usually means extending into the inter tidal zone as far as low water, but can be further around river estuaries.”

*“Coastal responsible authorities should **consider how to factor in neighbouring marine areas** and plans in their strategies. Linking local nature recovery strategies and marine spatial planning would help to identify land management changes that could benefit the estuarine or marine zone.”*

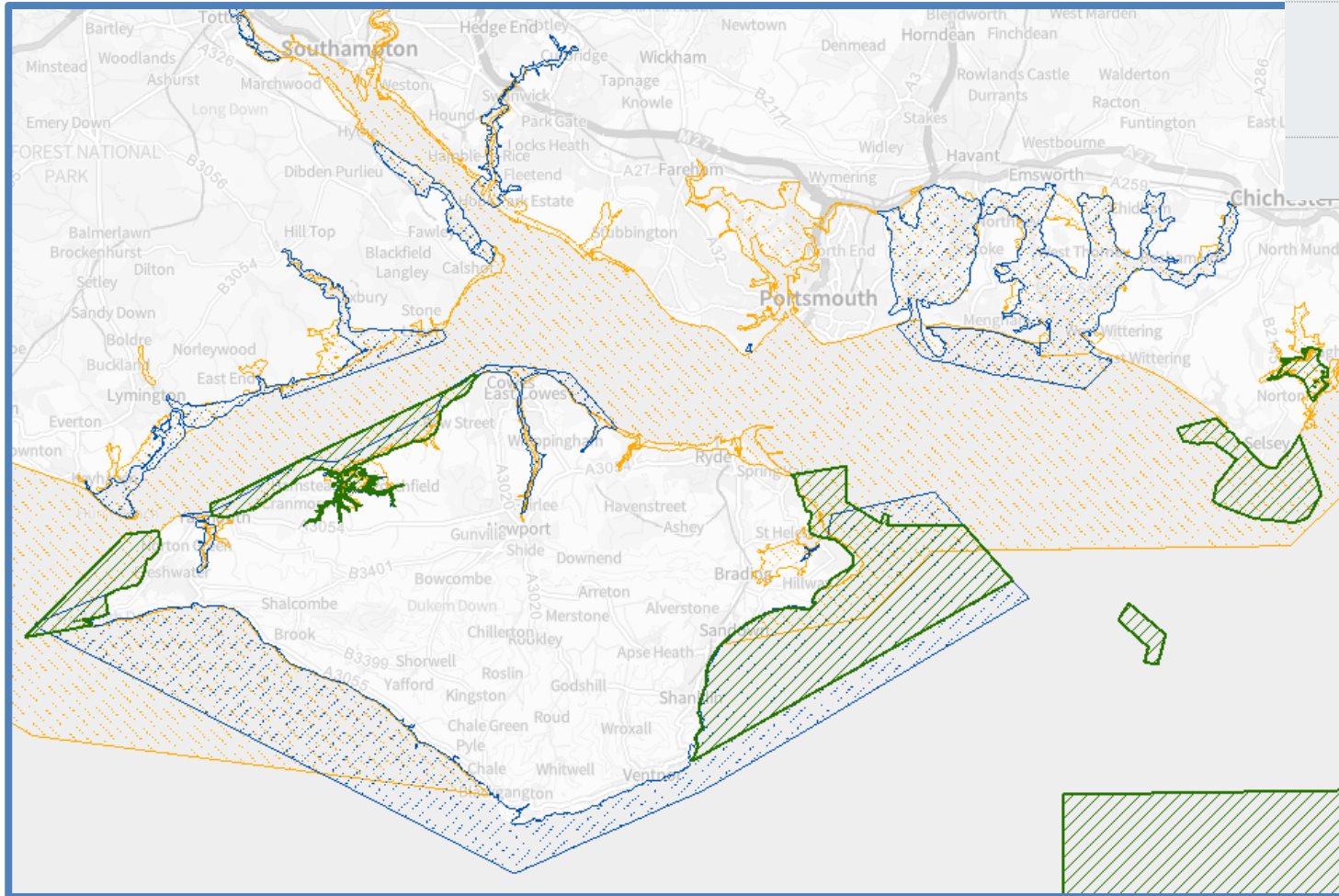
What about marine habitat mapping?

National marine LNRS works suggests that, initially, the local habitat map for marine areas contains:

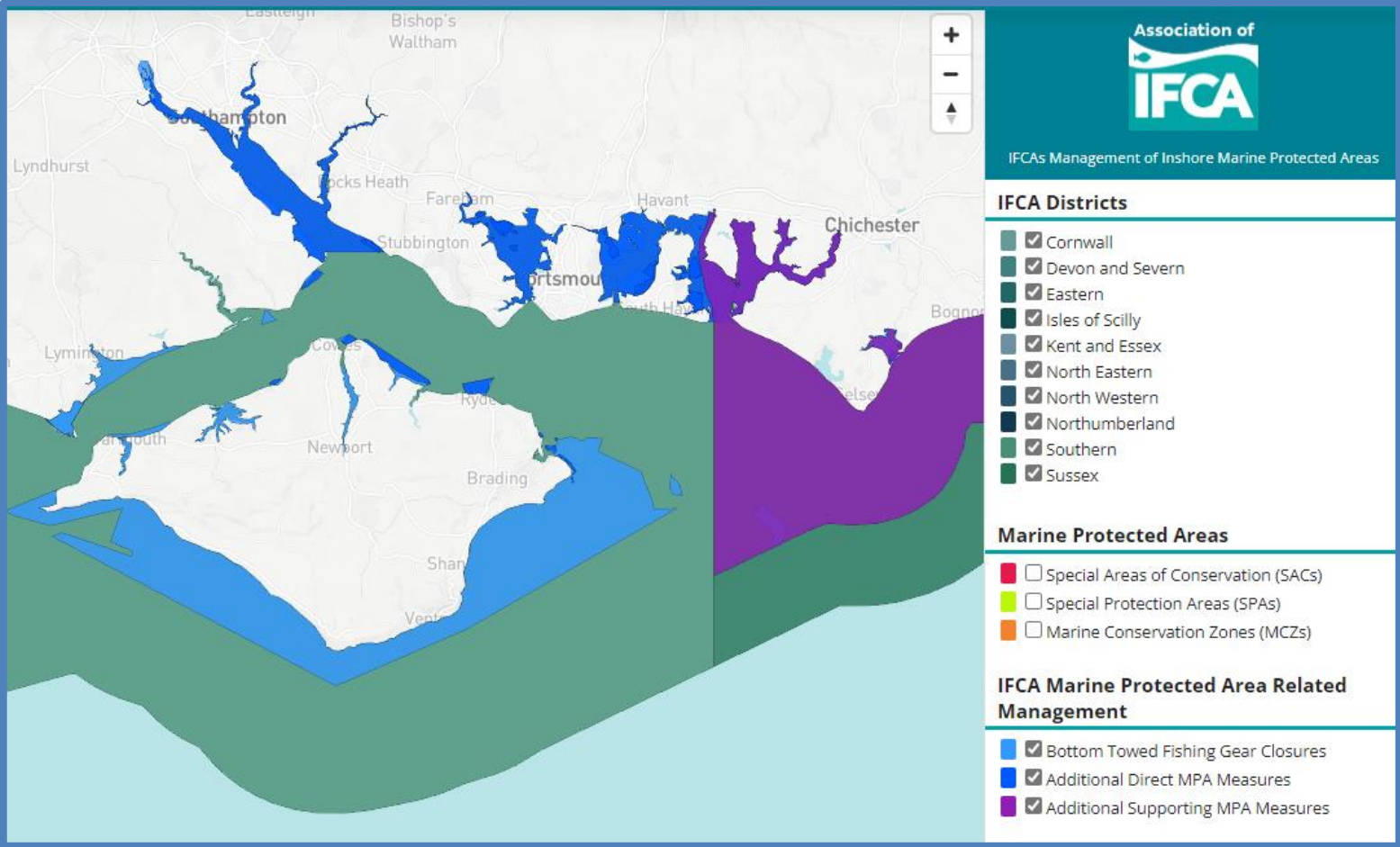
- Marine protected areas (Special Protection Areas, Special Areas of Conservation, Marine Conservation Zones, Highly Protected Marine Areas)
- Areas subject to management byelaws (enacted by the Marine Management Organisation, Inshore Fisheries and Conservation Authorities, or harbour authorities)
- Areas subject to voluntary marine protection agreements e.g. no anchoring zones
- Marine Irreplaceable Habitats - coastal sand dunes and spartina saltmarsh swards

Solent Designated Sites

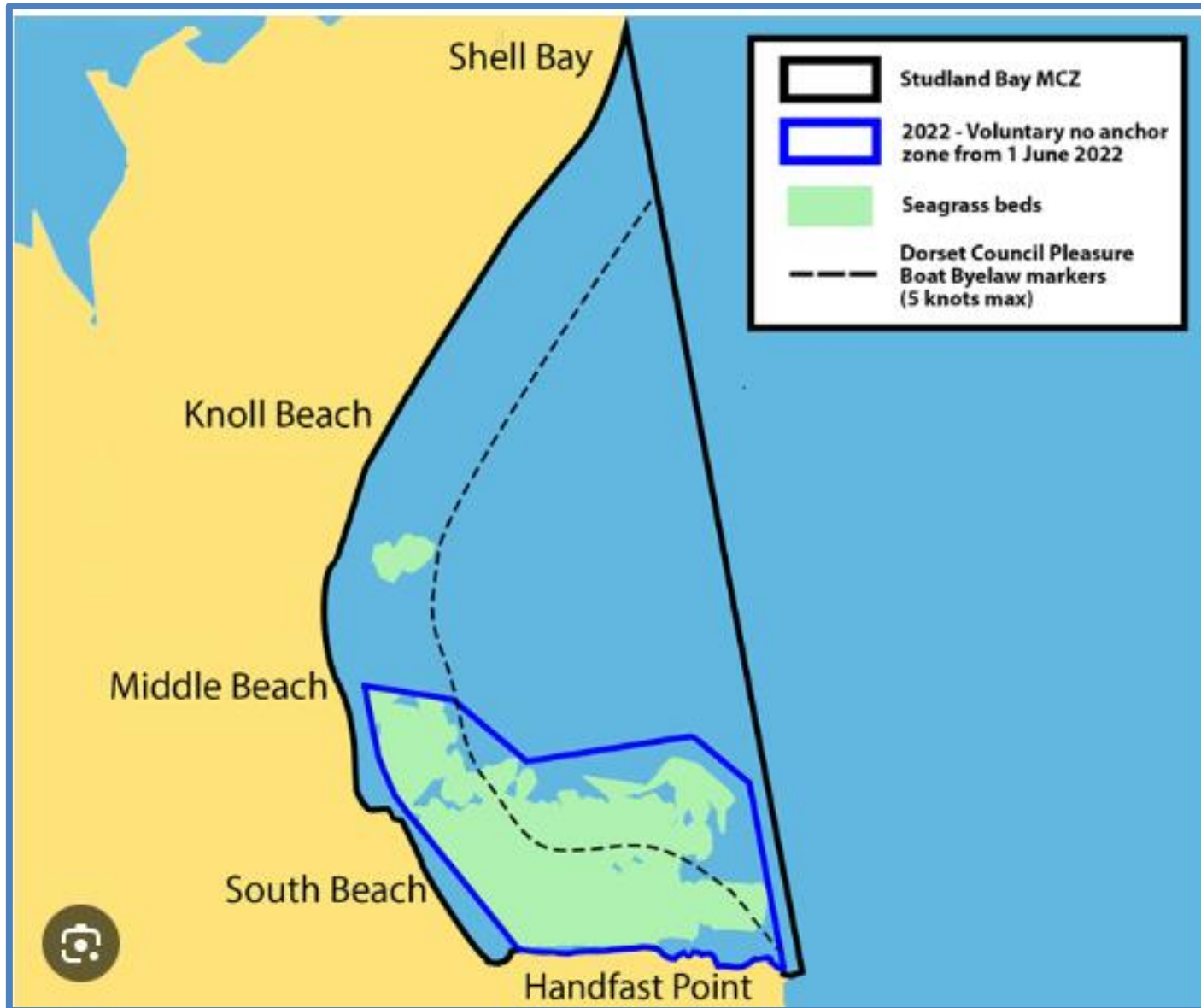
- Marine Conservation Zones (England)
- Marine Conservation Zone
- Highly Protected Marine Area
- Special Areas of Conservation (Marine Components GB)
- Candidate
- Designated
- Possible
- Special Protection Areas (Marine Components GB)
- Classified
- Potential



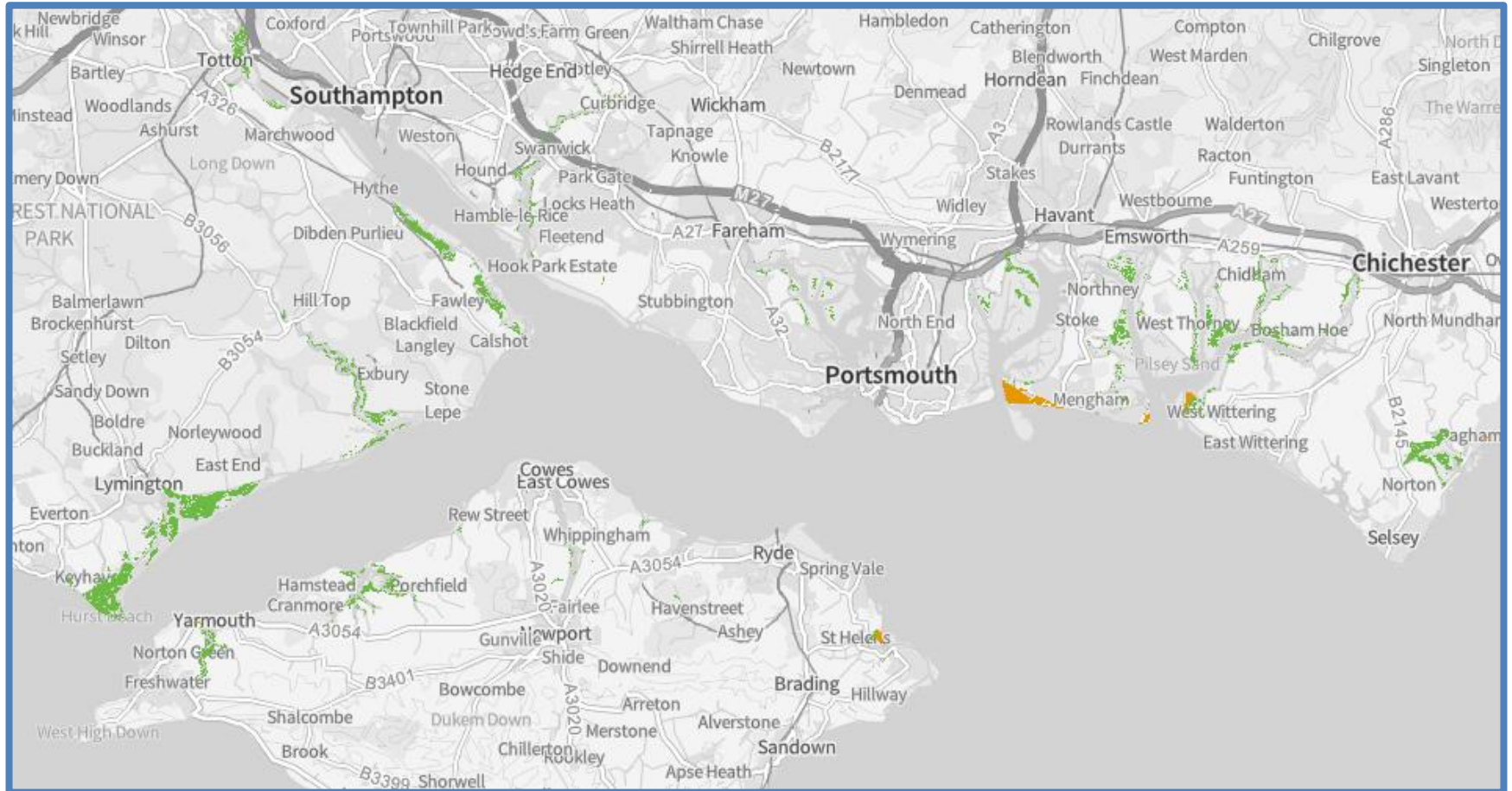
Fisheries Management Measures in MPAs



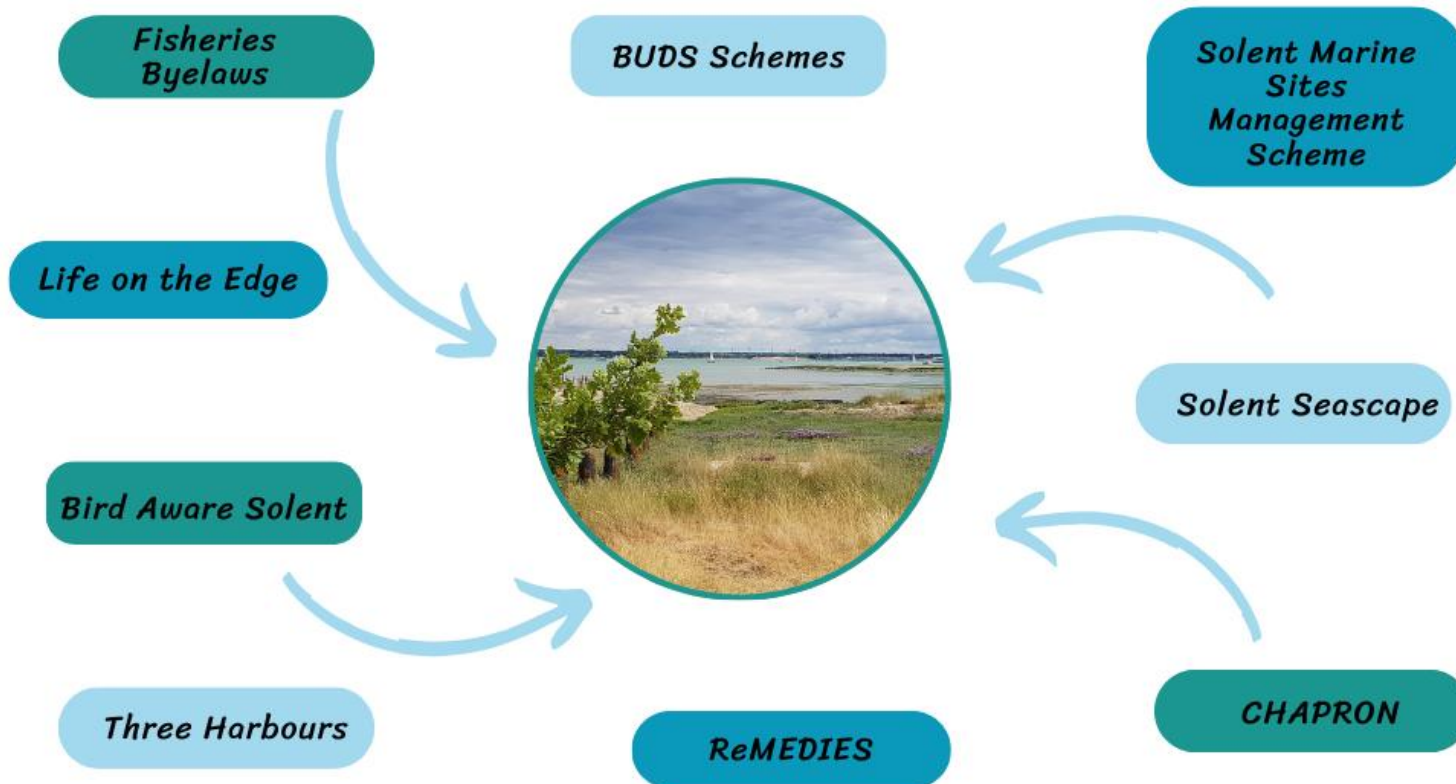
Studland Bay VNAZ



Irreplaceable Habitats: Saltmarsh and Sand Dunes



Nature recovery is already happening



Solent LNRS Coast and Marine: Next Steps

Thinking about the way forward...

1. We want to embed both coast and marine in the first iteration of LNRS'. In the Solent that will mean working with Hampshire County Council, Isle of Wight Council and West Sussex County Council as the Responsible Authorities.
2. We need **your input** in the consultation phase to make sure we capture all the good work already happening, look for gaps and start to set priorities.
3. The Solent Forum sit on the national marine LNRS working group, so will be monitoring aspects of marine LNRS development and will keep Solent Forum members informed via our news service.
4. We will continue to work with the Solent Seascape Project on their Solent Nature Recovery Plan and mapping portal.

Thank You

www.solentforum.org

